



US00D569546S

(12) **United States Design Patent**
Silcox

(10) **Patent No.:** **US D569,546 S**

(45) **Date of Patent:** **** May 20, 2008**

(54) **CIGARETTE LIGHTER WITH LEVEL**

D533,961 S	12/2006	Smith
D535,436 S	1/2007	Luo
D537,197 S	2/2007	Liu
D537,560 S	2/2007	Chuang
D538,971 S	3/2007	Smith
D539,471 S	3/2007	Ruan

(76) Inventor: **Jeff S. Silcox**, 2838 E. 66th St., Indianapolis, IN (US) 46220

(**) Term: **14 Years**

(21) Appl. No.: **29/288,089**

* cited by examiner

(22) Filed: **May 30, 2007**

Primary Examiner—Jennifer Rivard
(74) *Attorney, Agent, or Firm*—Michael A. Myers

(51) **LOC (8) Cl.** **27-05**

(52) **U.S. Cl.** **D27/142**

(58) **Field of Classification Search** D27/141–161;
431/253–256, 273–277, 129, 151–153, 143;
D10/69

See application file for complete search history.

(57) **CLAIM**

The ornamental design for a cigarette lighter with level, as shown and described.

DESCRIPTION

FIG. 1 is a perspective view of the cigarette lighter showing my new design;

FIG. 2 is a side view of the design of FIG. 1;

FIG. 3 is another side view of the design of FIG. 1;

FIG. 4 is a top view of the design of FIG. 1;

FIG. 5 is another side view of the design of FIG. 1;

FIG. 6 is another side view of the design of FIG. 1; and,

FIG. 7 is a bottom view of the design of FIG. 1.

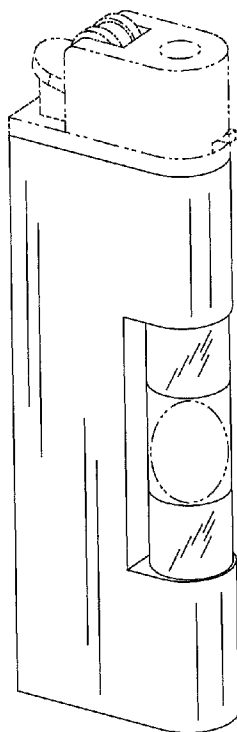
The broken line air bubble and burner head are shown for illustrative purposes only and form no part of the claimed design.

(56) **References Cited**

U.S. PATENT DOCUMENTS

4,092,096 A	5/1978	Goto	
D254,873 S	* 4/1980	Yoshinaga D27/156
D292,029 S	9/1987	Yoshinaga	
5,035,250 A	7/1991	Mazellie	
D332,152 S	* 12/1992	Ching D27/156
5,580,239 A	* 12/1996	Jang 431/253
D403,807 S	1/1999	Fontaine, Jr.	
D494,707 S	8/2004	Fontaine	
D508,755 S	8/2005	Richmond	
D526,915 S	* 8/2006	Liao D10/69
D528,245 S	9/2006	Smith	
D530,855 S	10/2006	Ruan	
D531,355 S	10/2006	Huang	
D531,356 S	10/2006	Ruan	

1 Claim, 3 Drawing Sheets



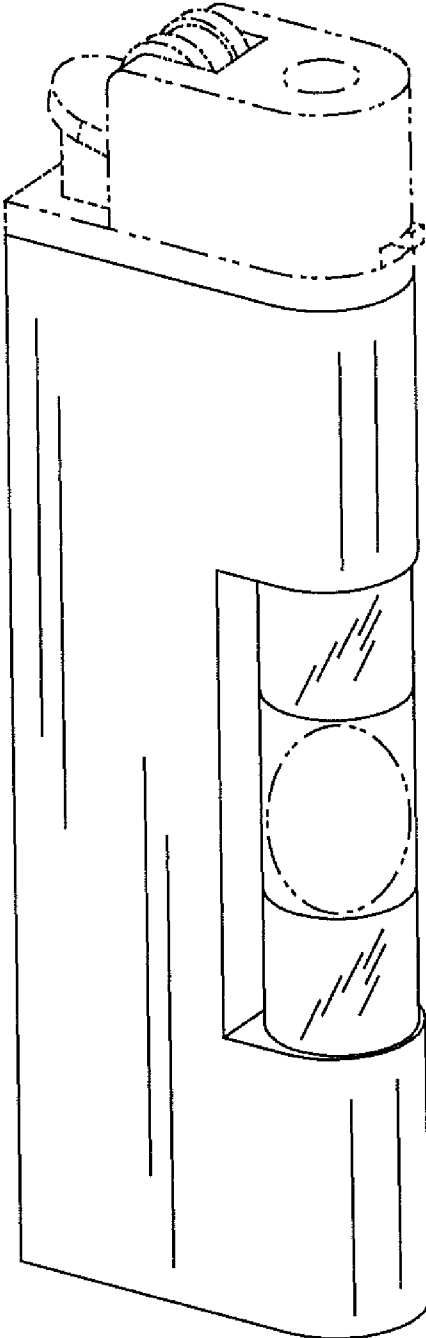


FIG. 1

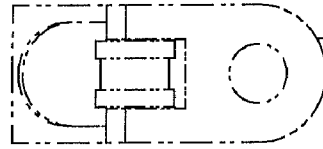


FIG. 4

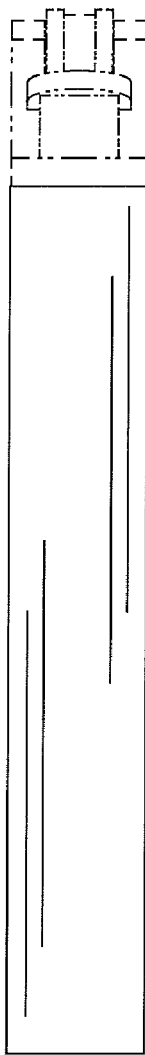


FIG. 3

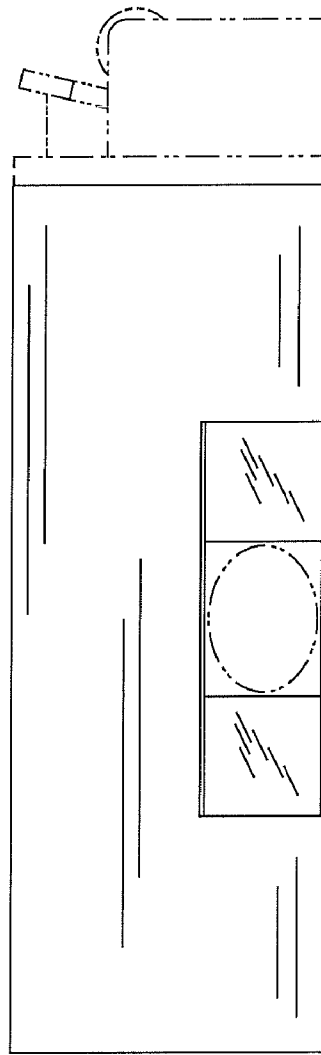


FIG. 2



FIG. 5

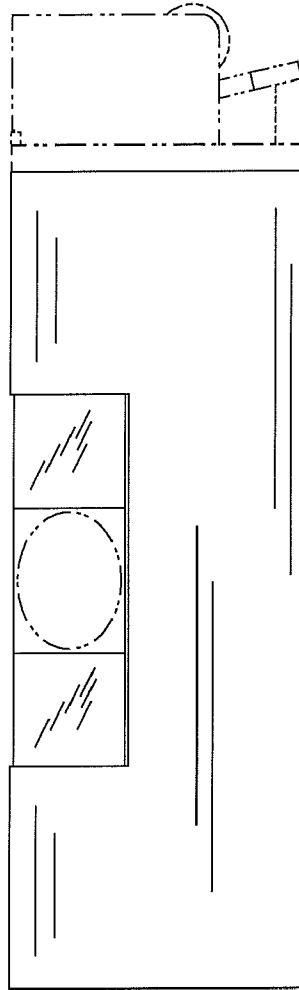


FIG. 6

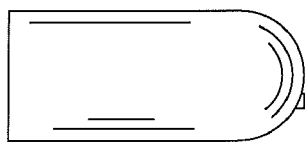


FIG. 7